

**FEATURES**

- Available 2', 3', 4', or 8'
- Heavy die formed steel channel
- Snap-on cover. No tools required. No hardware to lose
- Rotary lock lampholders for positive lamp contact
- Channel ends double as joiners
- Individual or row mounting. Surface or suspended

**PROJECT INFORMATION**

Project Name \_\_\_\_\_

Type \_\_\_\_\_

Catalog No. \_\_\_\_\_

Date \_\_\_\_\_

**CONSTRUCTION**

Heavy gauge cold rolled steel housings fully assembled. Channel cover provides room-side access to ballast.

**FINISH**

White painted parts are treated with a five stage phosphate bonding process and finished with a high reflectance baked enamel.

**BALLASTS**

Energy efficient, thermally protected, automatic resetting, Class P, high power factor, sound rated A, unless otherwise specified. CEE NEMA Premium compliant.

**ELECTRICAL**

Standard class "P", thermally protected, auto-resetting HPF ballast, sound rated A. CEE NEMA Premium compliant. All ballast leads extend a minimum of 6" through access location. NEC/CEC-compliant ballast disconnect is standard.

**CERTIFICATION**

All luminaires are built to UL 1598 standards and bear appropriate UL and cUL or CSA labels. Damp location labeling is standard. Emergency-equipped fixtures labeled UL 924.

**ORDERING INFORMATION**

**EXAMPLE CH4-132-E347-GLR**

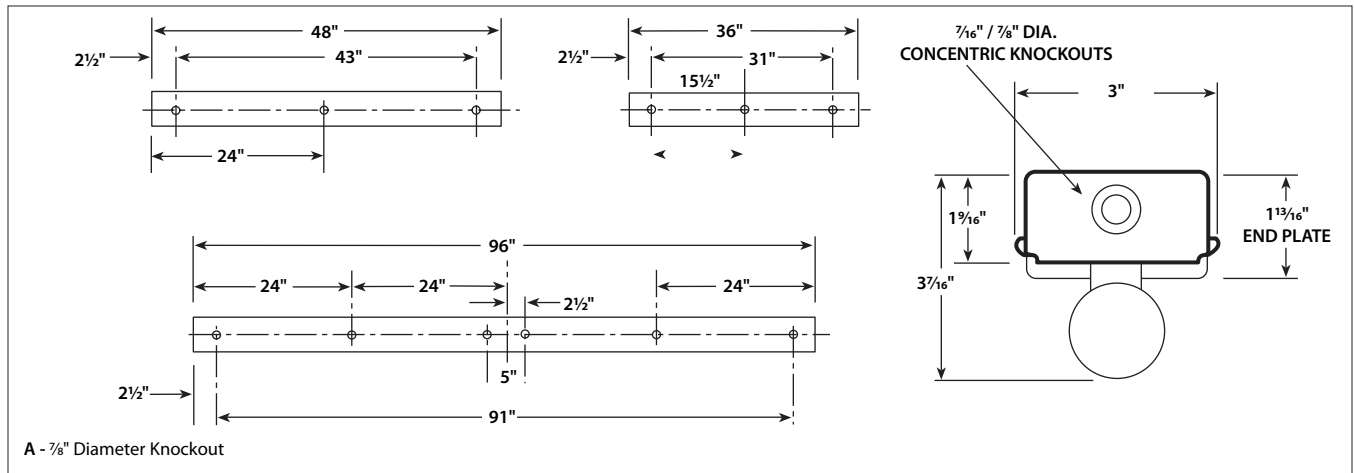
CH					E		
MODEL	SIZE	NO. OF LAMPS IN CROSS SECTION	LAMP TYPE	BALLAST	VOLTAGE	OPTIONS	
CH Heavy Duty Narrow Channel	2 2' 3 3' 4 4' 8 8'	1 One 2 Two	17 2', T8: 17 Watt 25 3', T8: 25 Watt 32 4', T8: 32 Watt 21 3', T5: 21 Watt 28 4', T5: 28 Watt 54 4', T5HO: 54 or 51 Watt	E Electronic T8, Instant Start <small>For a specific ballast vendor, show as option.</small>	U 120V-277V 347 347V	GLR Fast Blow Fuse GMF Slow Blow Fuse EL Emergency Battery Pack PAF Paint After Fabrication	

**ACCESSORIES (ORDER SEPARATELY)**

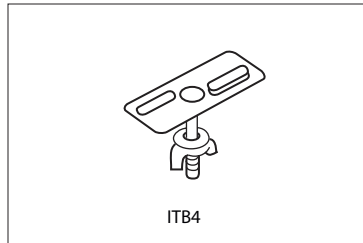
ITB4	Hanger for close mounting on a T-Bar ceiling
CHWG3	3' Wire Guard
CHWG4	4' Wire Guard, 2 required for 8' fixture
CHRA3	3' Asymmetric Reflector <sup>1</sup>
CHRA4	4' Asymmetric Reflector, 2 required for 8' fixture <sup>1</sup>
CHR3	3' Symmetric Reflector <sup>1</sup>
CHR4	4' Symmetric Reflector, 2 required for 8' fixture <sup>1</sup>

<sup>1</sup>Reflectors fit 1-lamp profiles only.

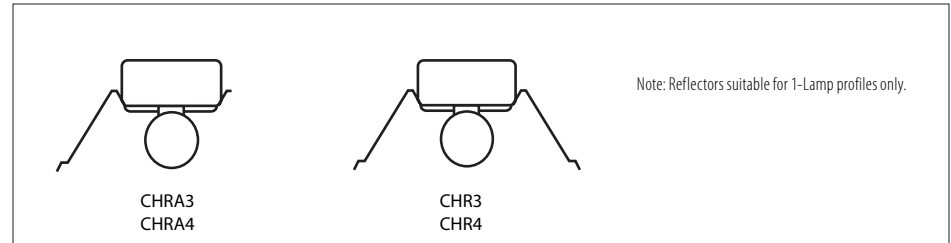
**DIMENSIONAL DATA**



**MOUNTING DATA**



**ACCESSORY REFLECTORS FOR ONE LAMP PROFILE**



**NOTE:** All dimensions are in inches; dimensions and specifications are subject to change without notice. Please consult factory or check sample for verification.